

Historic, Archive Document

Do not assume content reflects current scientific knowledge, policies, or practices.

SONG'S Summer Price List

Select Varieties of Iris and Peonies

J. D. SONG, Boulder, Colorado

JUL 22 1933



"That's Me—J. D.," In My Iris, June 7, 1932.

Iris Prices for Summer and Fall, 1933

The 1933 new crop Iris divisions will be shipped at your convenience any time from about July 10 to December.

Except where noted, all Iris roots priced prepaid in U. S. A. and Canada.

Prices are for divisions, as usually sold and planted.

The Iris blossom is tripartite. Three portions stand erect, their tips meeting. These are called the standards. Three portions droop. These are called the falls.

Usually the two sets are of different colors, shadings or markings. In describing Iris blossoms "S" means standards, "F" means falls. Keep this in mind and it will help you to visualize the appearance of the flower.

NOTE. You will notice in descriptions given by myself and others the word "self." This means that both standards and falls are the same color, and that the colors are not "ringed and streaked," but are without markings or at least have no conspicuous markings. Pink Satin is an excellent example of a fine Iris "self." Selves are not very plentiful among Iris varieties. Usually the standards are lighter than the falls.

AMBASSADEUR. A wonderful variety now so plentiful that costs you very little. But tho inexpensive Ambassadeur compares very favorably with some of the newer sorts costing a dollar or more each. S. bronzy-violet. F. rich velvety red-purple. 15c.

(Iris Continued—Next Page)

- ANNA FARR.** Flowers white, bordered with blue. 15c.
- ANN PAGE.** Large lavender-blue self. Fragrant. 25c.
- ANTARES.** S. soft cream. F. white, dotted blue. 35c.
- ARCTURUS.** S. pale yellow. F. brilliant dahlia purple. 25c.
- ARGOS.** S. blue-mauve. F. reddish, shading to blue. 35c.
- ASIA.** S. lavender, suffused purple. F. light purple. 15c.
- BLACK PRINCE.** (True Perry variety.) S. intense violet, F. black-purple. Rich combination. 15c.
- BLUE BANNER.** S. light lavender-blue. F. velvety deeper blue shading to pale blue at edges. \$1.00.
- BLUE VELVET.** Both standards and falls rich velvety dark blue. Flowers of heavy substance well placed on strong stems splendidly branched. As the name implies, the flower has the appearance of rich, dark blue velvet. Buds almost black. \$4.00.
- BOUREM.** S. Bordeaux red. F. violet, shaded garnet-red. 50c.
- BRANDYWINE.** S. and F. pale blue. 15c.
- BRUNO.** S. bronze, tinted lavender. F. velvety wine-purple. Flowers unusually large and of heavy substance. An outstanding Dominion seedling. 35c.
- BUTO.** S. royal purple. F. dark violet. 50c.
- CANDLELIGHT.** Both standards and falls light pinkish lavender, illuminated within with a rich golden glow. Candlelight won highest rating a few years ago in a symposium conducted by the American Iris Society. 50c.
- CARDINAL.** S. lavender, overlaid rose. F. dark red purple of velvety texture. 50c.
- CASSIOPEE.** S. ageratum-blue, with smoked edges. F. dauphin's blue. 35c.
- CONQUISTADOR.** Lavender-violet. Tall, large and fragrant. 25c.
- COPPERSMITH.** S. crimson purple. F. Indian lake shading to dahlia carmine. 50c.
- DESERT DAWN.** A glorious rich yellow and lavender blend, with the effect of radiant illumination, retaining small areas of pure lavender in the tips of both standards and falls. \$6.00.
- DOXA.** S. creamy blend. F. flushed with mauve, shading to rich chestnut. \$1.00.
- DR. CHAS. MAYO.** Lovely lavender-pink. One of the most charming in the pink toned class. Fragrant. 35c.
- DREAM.** Both standards and falls beautiful lilac-pink. Very dependable and pleasing. 15c.
- DUKE OF BEDFORD.** S. deep violet. F. deep violet-purple, velvety and brilliant. A splendid iris of the Dominion race. I have a large stock of this and am using it for one of my specials this season. Worth more, but yours for only 15c.
- EDGEWOOD.** A pink and yellow bi-color effect. Tall and large. \$1.00.
- EL CAPITAN.** Bluish-violet bi-color. Large and fine. \$1.00.
- ELIZABETH EGELBERG.** S. fine blend of pink and lavender, broad and overlapping. F. flaring, aconite-violet. Very large flowers. \$1.00.
- ETOILE DU MATIN.** S. sulphur, yellow. dotted brown at base. F. same washed blue, veined maroon. 35c.
- FOLKWANG.** S. light rose-pink. F. deep rose-carmine. 35c.
- FRA ANGELICO.** S. light bronze-gold. F. same, overlaid metallic light lavender-blue. 25c.
- FRIEDA MOHR.** One of the very largest and finest Iris. S. light pinkish-lilac. F. deep lilac-rose. If you have not seen Frieda-Mohr then "you hain't seen nuthin' yet" in Iris. 50c.
- GAVIOTA.** Creamy white plicata. Both standards and falls edged bright yellow. 25c.
- GILEAD.** (Andrews.) A fine golden yellow bronze self. Ground color soft buff overlaid amber, the falls deeper than standards. Large. \$10.00.
- GLOWING EMBERS.** S. iridescent buff, flushed violet. F. velvety dark glowing red. Flowers large and of heavy texture. 25c.
- GOLD IMPERIAL.** Solid chrome yellow self. 25c.
- GRACE STURTEVANT.** My favorite in the rich dark red-brown and violet-carmine class. S. brownish purple. F. deeper than standards and so velvety that they appear almost black in certain lights. The plant is sturdy, the stems tall, stout and well branched. Nothing else quite like Grace Sturtevant. All who see this swear they must have it "eventually, if not now." When I bought my first division of this from Grace Sturtevant herself, the price was \$40.00. Now only \$2.00 for a good strong division.
- INDIAN CHIEF.** S. beautiful violet-red. F. deep glowing velvety-red. \$1.50.
- IRIS KING.** S. old gold. F. garnet brown, edged yellow. 15c.
- ISOLENE.** S. rose-pink. F. purplish-rose, gold throat. 15c.
- KANSAS.** S. chinese violet, shaded lilac. F. light purple, shaded violet. 50c.
- KOCHII.** Early blackish purple self. 15c.
- LABOR.** Luminous reddish violet, suffused with a soft coppery glow. 50c.

- LADY BYNG.** Both standards and falls clear lavender, suffused with rose. Similar in color to Pallida Dalmatica, but larger and finer in every way. 15c.
- LA NEIGE.** Pure white French variety with pleasing form different from other Iris. 15c.
- LENT A. WILLIAMSON.** S. lavender-violet. F. violet-purple. 15c.
- LOETITIA MICHAUD.** Both S. and F. soft lobelia blue, shading lighter at the edges. A lovely variety. 50c.
- LORD OF JUNE.** S. lavender F. violet-blue. Tall. Large. 15c.
- LOS ANGELES.** Immense white flowers of fine shape and substance, the standards faintly edged pale blue, the falls beautifully reticulated red brown at the base, the blue style arms adding a note of clear color in the center. Tall and widely branched. \$1.00.
- MIDGARD.** A charming combination of soft yellow, pink and rose. The general effect is a delightful shade of rose-pink suffused with yellow. Dainty and pleasing. Roots normally rather small but very healthy and vigorous. 50c.
- MIRASOL.** Standards and falls solid golden yellow, no markings. Flowers large, well formed. \$1.50.
- MME. GAUDICHAU.** S. deepest blue violet. F. velvety blackish blue purple. Tall, good size, early. Cheap only because stock now plentiful. Good as many selling for dollar or more. 15c.
- MONTEREY.** Tall, giant flowered dark bronzed red-purple. The broad velvety falls are edged with the lighter shade of the standards. \$1.50.
- MORNING SPLENDOR.** S. petunia violet. F. raisin purple. 25c.
- MOTHER OF PEARL.** S. and F. pearly lavender. Tall. 15c.
- MRS. ILTIS.** Blue toned self. Very good. 25c.
- MOUNT ROYAL.** S. deep bluish violet. F. very velvety rich red pansy violet. Flowers of heavy substance. 50c.
- OMAHA.** Unusual and pleasing combination of coppery pink and brownish cinnamon. \$1.00.
- OPERA.** S. pansy violet shading to brownish violet at base. F. violet purple. Good. 15c.
- OPHELIA.** A blend of warm orange, cream, mauve and bronze tints. 50c.
- ORIFLAMME.** S. light blue. F. deep violet. Edges of petals waved. Very large. 15c.
- ORION.** S. soft violet. F. blackish violet. 50c.
- PALLIDA DALMATICA.** Standards and falls lavender-blue. Tall. 15c.
- PEERLESS.** S. bright violet-blue. F. brilliant pansy violet with white throat. \$1.00.
- PERSIA.** S. smoky-blue. F. purple blue in center, shading lighter blue at margin. \$3.50.
- PINK SATIN.** Described as follows by one of America's leading Iris authorities: "We think this is the clearest, purest pink Iris we have seen. It is a self pink with large finely shaped flowers and well poised on the stem." The rich satiny sheen suggests the name, Pink Satin. \$5.00.
- PLUIE D'OR.** Golden yellow self, with rich orange beard. Winner of the Dykes Medal in France. \$1.75.
- RAMESES.** Blend of henna, brown, yellow and old rose. Large and lovely. \$4.00.
- RED DOMINION.** S. clear lustrous deep red, slightly frilled. F. velvety red, flushed with a near-black luster in the center. \$15.00.
- REFULGENCE.** S. light violet-blue with bronze shading. F. deep violet-purple. Rich flowers of gigantic size on tall stout stems. \$2.40.
- ROMOLA.** S. pale lilac. F. red-violet. Strong grower and free flowering. 50c.
- RUSTY GOLD.** (Andrews.) An orange-bronze blend with a tarnished gold finish, flushed coppery red. \$3.00.
- SACRAMENTO.** S. white heavily edged red-purple. F. reticulated with same color. Very unusual. \$3.50.
- SAN FRANCISCO.** Both standards and falls white distinctly edged blue-lavender. In size shape and substance there is nothing to approach it among the older plicatas. Tall stems, branching low and wide like a candelabra. Awarded Dykes Memorial Medal as best American introduction in 1927. Similar to Los Angeles, but with wider, richer blue edging. San Francisco is a healthy, sturdy grower and has proved absolutely hardy in all my plantings, needing no winter protection. \$1.00.
- SAN GABRIEL.** Large early blooming pinkish lavender. 25c.
- SANTA BARBARA.** Considered by many to be the largest and finest of the pure lavender blues. Standards and flaring falls same lovely color. A wonderful Iris. 35c.
- SENSATION.** Gigantic cornflower blue self, with flaring falls. Fragrant. \$1.50.
- SIR MICHAEL.** S. lavender-blue. F. purple, suffused red. A striking variety of unusual merit, ranking among the world's very best Iris. Strong stems, widely branched. \$2.00.
- SNOW WHITE.** A pure white of good size and splendid form. Good substance, standing wind, rain and sun. Larger than White Knight. 50c.
- SONOMA.** Standards and falls an attractive yellow, making a most pleasing garden effect. 50c.
- SOUV. DE MME. LOETITIA MICHAUD.** (See Loetitia Michaud).

SOUV. DE MME. GAUDICHAU. (See Mme. Gaudichau.)

SUSAN BLISS. Delightful rose pink self. 25c.

SWEET LAVENDER. S. light lavender-blue. F. deeper rose-lavender. Ruffled. Fragrant. 15c.

TRUE CHARM. Charming white, edged with blue lavender. Frilled. Scented. 25c.

TRUE DELIGHT. Similar to True Charm, but edging is of pure rose-pink instead of lavender. 35c.

WATTEAU. S. campanula violet. F. violet-purple. 25c.

WHITE KNIGHT. A pure white self, scented. Strong grower. 15c.

WILLIAM MOHR. Both standards and falls ground color of pale lilac, standards flushed darker. The whole flower is beautifully veined manganese violet. Immense blossoms. Root and plant very small. That such a lovely gigantic flower can come from so small a root with sparse foliage amazes all who see it. \$1.00.

ZUA. Early lilac-white, crinkled like crepe paper. Fragrant. A real novelty. 25c.

Five Price Groups

With Special Offers as Noted.

Note the quantity prices at bottom of each of these 5 lists. You may take all different, all alike, or as many as you wish of any variety to get special rates under each list.

These at 15c Each

Ambassadeur	La Neige *
Anna Farr	L. A. Williamson
Asia	Lord of June
Black Prince	Mme. Gaudichau
Brandywine	Mother of Pearl
Dream	Opera
Duke of Bedford	Oriflamme
Iris King	Pallida Dalmatica
Kochii	Sweet Lavender
Lady Byng	White Knight

SPECIAL: Any 2 FOR 25c. ANY 10 FOR \$1.00.

These at 25c Each

Ann Page	Morning Splendor
Arcturus	Mrs. Iltis
Conquistador	San Gabriel
Fra Angelico	Susan Bliss
Gaviota	True Charm
Glowing Embers	Watteau
Gold Imperial	Zua

SPECIAL: ANY 6 FOR \$1.00.

These at 35c Each

Antares	Etoile du Matin
Argos	Folkwang
Bruno	Imperator
Cassiopee	Santa Barbara
Dr. Chas. Mayo	True Delight

SPECIAL: ANY 4 FOR \$1.00. 9 FOR \$2.00.

These at 50c Each

Bourem	Loetitia Michaud
Buto	Midgard
Candlelight	Mount Royal
Cardinal	Ophelia
Coppersmith	Orion
Frieda Mohr	Romola
Kansas	Snow White
Labor	Sonoma

SPECIAL: ANY 3 FOR \$1.00. 10 FOR \$3.00.

These at \$1.00 Each

Blue Banner	Los Angeles
Doxa	Omaha
Edgewood	Peerless
El Capitan	San Francisco
Eliz. Edelberg	Wm. Mohr

SPECIAL: ANY 6 FOR \$5.00. 14 FOR \$10.00.

\$8.60 Rare Iris Collection

Grace Sturtevant	Pluie D'Or
Indian Chief	Refulgence
Mirasol	Sensation
Monterey	Candlelight

ONE EACH OF THESE 8 FOR \$8.60. PREPAID. OR, ONE EACH OF ANY 5 OF THE 8 FOR \$6.20. PREPAID.

Other Iris Collections

Refer to the special quantity prices on all Iris priced singly from 15c to \$1.00, and make up your own collections of such varieties.

Will be glad to quote on any list of five or more varieties priced at more than \$1.00 each.

Large Lots Wholesale

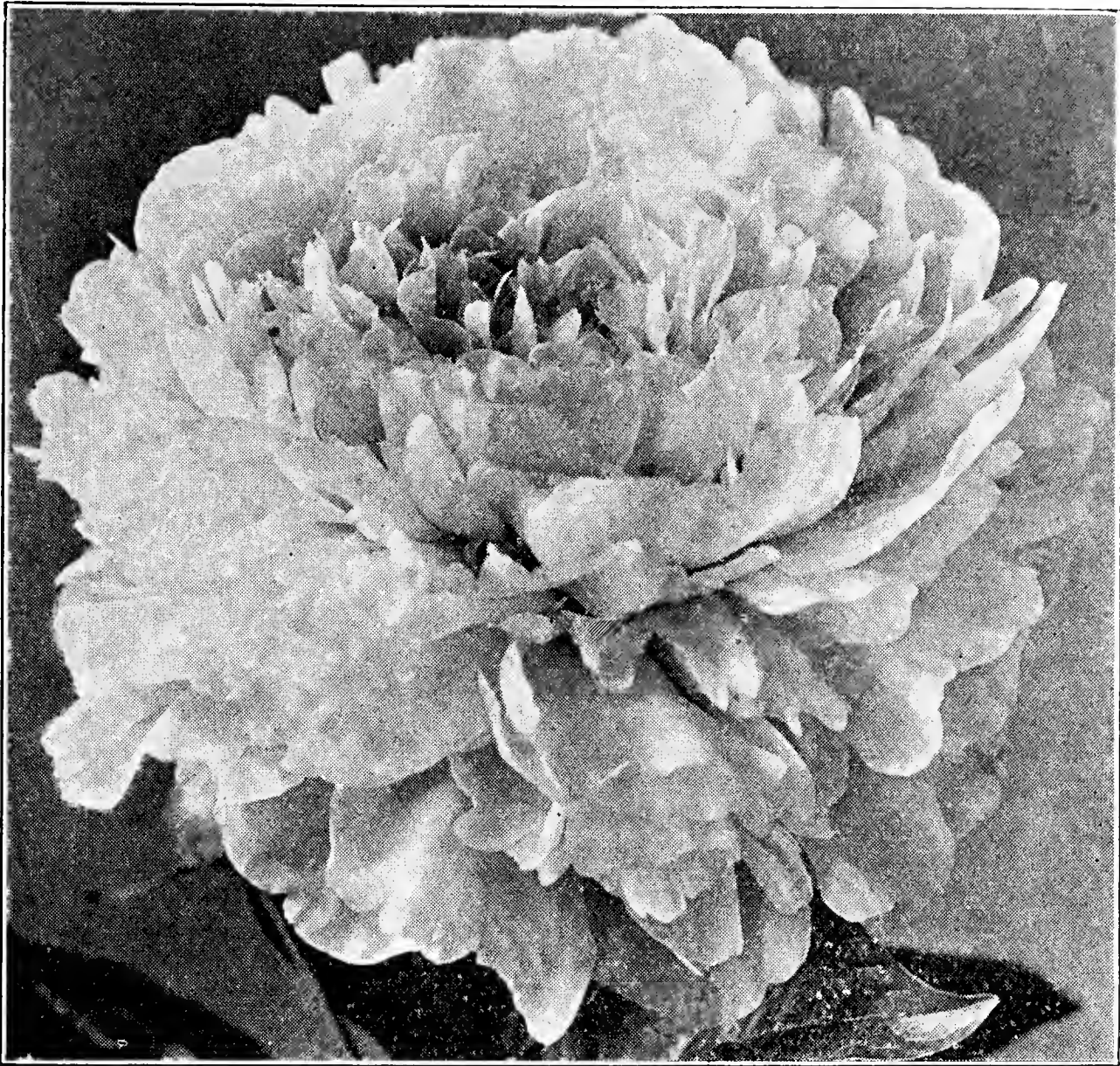
If you can use large lots of any of following Iris varieties for re-sale or large plantings, then submit definite list of kinds and quantities of each for special wholesale prices F. O. B. BOULDER.

Ambassadeur	Kochii
Anna Farr	La Neige
Black Prince	Lent A. Williamson
Bruno	Lord of June
Candlelight	Mme. Gaudichau
Dream	Opera
Duke of Bedford	Oriflamme
Frieda Mohr	Pallida Dalmatica
Gaviota	Sweet Lavender
Glowing Embers	True Charm
Iris King	White Knight

OPEN SEASON FOR IRIS. Iris may be reset any time when the ground isn't frozen. Best time is from mid-summer to last of September so the roots become well established before winter. But some of the finest results I ever had were from late November plantings. Special leaflet will be sent with orders, telling a few secrets of success with Iris and Peonies.

NEW THRILLS FROM NEW IRIS. Takes nerve to do it, but many flower lovers would be way to the good if they would dig up and discard some of the old-time Iris and start over with the newer and finer varieties. Many Iris plantings are far too old and thick to thrive and produce good blooms anyway. If wish to save some of your old favorites (and it is true that a few of the old kinds are really fine), take up the big clumps, divide into small parts, move to new location or renew the soil in old bed, reset what you care to give room to, and give the rest away. Or, you can cut out most of the clump and let a portion remain with its roots not disturbed. Fill in with new soil around roots left in bed.

SONG'S Lovely Double Flowered Peonies



Mammoth Colorado Peony Majestic

PRICES ARE FOR STANDARD DIVISIONS, each division having 3 to 5 eyes. At my new low prices, you can plant these regular or standard size roots at small cost.

BUT, if you wish to hold down the expense still more, and will be content to wait longer for best results, then take advantage of my lower prices for the smaller **TWO EYE** divisions.

TWO EYE DIVISIONS ALSO. These divisions are smaller, but will eventually produce as fine results as the standard divisions. If you wish the **TWO EYE** divisions, then figure any at just one-third off the prices given here for the 3 to 5 eye divisions. Be sure to specify two eye divisions if order at the lower prices.

All Peony Roots Priced Prepaid.
Deliveries from early Sept. to Dec.

AVALANCHE. As the name implies, pure snow white. Center of some petals faintly tinted carmine. Strong, tall mid-season variety and free bloomer. Fragrant. 54c.

BARONESS SCHROEDER. Buds delicate flesh, changing to white. Later than Avalanche. 75c.

EDULIS SUPERBA. Bright rose-pink. Very early. Fragrant. A favorite cut flower variety. 45c.

ELWOOD PLEAS. Lovely shell pink, delightfully fragrant. Strong stems support well the very large blooms. Some carry six or more flowers, all of good size, making a bouquet from a single stem, a characteristic found also in the popular variety, Therese. Midseason. Have a large stock of Elwood Pleas, hence the special low price. Good 3 to 5 eye divisions only 48c.

FESTIVA MAXIMA. The well known white, flecked crimson. Many now prefer Avalanche, but Festiva Maxima is still among the good whites. 39c.

FRANCES WILLARD. Creamy white. The large flowers open blush, but turn white, showing golden stamens. Midseason. \$1.05.

GENE STRATTON PORTER. A recent introduction of unusual merit. Pure white of charming shape and large size. If it has any faults, I have not been able to discover them. Midseason, later than Avalanche.

Blooms in my field along with Baroness Schroeder. Has been quite high priced, but this season I can supply the standard size divisions of this new white for \$2.70.

GROVER CLEVELAND. Discontinued, because so similar to Karl Rosenfield, which is better.

HARRY L. RICHARDSON. A good new late red. \$3.60.

JUBILEE. An immense, unique show variety, opening delicate pink but quickly changing to pure white. Petals are irregular in shape, a mixture of very wide and very narrow. Blossoms among the largest known, sometimes exceeding 11 inches in diameter. Has twice won the prize at National Peony shows for best 6 blooms. Cut before flowers fully open, and let them open in the house, to get the greatest thrill from Jubilee. 75c.

KARL ROSENFELD. One of the best and most dependable of the reds. Mid-season. Rich Crimson. Plants healthy and vigorous, produce an abundance of large semi-rose type blooms, held erect by strong stiff stems. What's more, the flowers remain in good condition for many days, whether on the plant or when cut. Special price for the 3 to 5 eye divisions only 39c.

LA FEE. A scarce variety of unusual habit. Flowers of rose-pink are borne in clusters, in great profusion. Should be cut before fully open, as the clusters are too heavy for the strong stem in case of hard winds or rain. \$2.25.

LE CYGNE. Considered by many as the finest pure white. But ideal specimen blooms are not likely to be produced until the plant is three or four years old. \$2.25.

LONGFELLOW. Brilliant crimson, with golden stamens surrounding the center. very slow to fade, either when cut, or out in the garden. A snappy red. Good in every way. 66c.

MAJESTIC. Originated here at Boulder by my friend D. M. Andrews, proprietor of the Rockmont Nursery. Flowers of largest size, on strong stiff stems. A perfect rose-type, expanding freely, with no tight buds. Color, rose-pink of even tone. Fragrant. \$3.60.

MARTHA BULLOCH. Enormous cup-shaped blooms of rose pink. Stems tall and strong, usually producing but one bloom, thus not requiring disbudding for best specimen blooms. \$1.65.

MARY W. SHAYLOR. An unusual fragrant pink. The guard or outer petals are shell pink, the center a creamy yellow with bright yellow stamens visible among the petals. A prolific bloomer, especially good for landscape effects. 87c.

MONS. JULES ELIE. Immense globe type. Dark pink with silvery sheen. 84c.

MONS. MARTIN CAHUZAC. Known as the DARKEST red peony. A deep maroon-red of good size. Until plants well established, the flowers may come only semi-double. Later are fully double under normal conditions. \$1.32.

MRS. EDWARD HARDING. Pure white. Fine flowers of perfect form and delicate, lacy quality. Free flowering. Stiff stems. Midseason. \$1.95.

NIMBUS. (Andrews.) Lovely new white. The flowers open light pink, but change to white. Plant stems and flowers good in every way. \$3.00.

OCTAVIE DEMAY. One of the earliest, largest and best light pinks. Plants and stems not so tall as most varieties, but the flowers are exquisite, well supported on sturdy stout stems. Should be in every collection both because of its all around good qualities and also because of its earliness, thus advancing and prolonging the blooming season of GOOD light pink peonies. Plant this in front of your other Peonies. 60c.

OFFICINALIS RUBRA. The well known old-fashioned extra early red "piney" of the old-time garden. Roots and plants different from ordinary peonies. Especially valuable because of its extreme earliness. Seldom fails to be in bloom for Decoration Day in most sections. 60c.

OPAL. Guard petals delicate pink upon opening, changing to white. Center is opal pink. Vigorous plant. Profuse bloomer. A dainty and beautiful variety. 90c.

OZONE. One of the earliest light pinks. Comes when good pinks are scarce and welcome, ahead of most others. Good stems. Free bloomer. A pleasing addition to any Peony collection. \$1.05.

PHILIPPE RIVOIRE. Very dark crimson. Cup-shaped flowers of rose type. Strong healthy plant. Tall, straight stems. Keeps well when cut. Something about the color and form of this Peony that makes it stand out both in the garden and show room. It was one of the most attractive varieties in my big display in Denver show June 15-16. Cut when blooms about half open for best results indoors. \$2.25.

PRESIDENT WILSON. Soft rose-pink flowers of very large size, well supported on strong stems. One of the best to date. \$4.20.

RENIE HORTENSE. Soft, beautiful pink. Semi-rose type. Center of flower flecked crimson. Midseason, following close after Octavie Demay of similar color. A wonderful exhibition as well as commercial variety and surprisingly inexpensive for so good a Peony. 72c.

SARAH BERNHARDT. Apple blossom pink, with each petal tipped silver. Semi-rose type. About as tall as Martha Bullock, and blooms nearly a week ahead of Martha. Good idea to have both. 90c.

SOLANGE. A most unusual, interesting and charming Peony. A real novelty. Nothing else quite like it. Color, soft pink-cream with a slight suffusion of tan or Havana brown, this deepening at the heart. Rose type flowers, coming out just a little later than the average midseason varieties. The buds are exceedingly solid and heavy, the petals are many and rather closely packed, and of fine texture. Should be cut before flowers fully open and allowed to open slowly indoors, tho I have wonderful blooms right now as I write this, (June 19), out in the field. Solange was one of the sensations at the Denver flower show last week. It kept better than nearly all other varieties. Every Peony lover should have Solange. \$1.11.

THERESE. Enormous show flower of compact rose type. Color, satiny pink, lilac-white center, with a glossy reflex. Even without disbudding, the center flower is of immense size. Often as many as 5 lateral or side blooms of good size also. Therese has been rated as the best pink. Takes several years for plants to produce typical Therese blooms. \$1.20.

WALTER FAXON. Uniform bright rose, deepening towards the center. There is a suggestion of shrimp pink in the color tone. Not quite so strong grower as some other favorites, and stems not so stout as could be desired. The delicate color makes up for some of these shortcomings. \$1.20.

Peony Collections

SPECIALLY PRICED

NOTE. Peony Collections offered in 3 to 5 eye divisions only.

\$3.90 PEONY COLLECTION

Avalanche	Karl Rosenfield
Edulis Superba	Octavie Demay
Elwood Pleas	Officinalis Rubra
Frances Willard	Sarah Bernhardt
Jubilee	Solange

One each, of these 8, labeled, for \$3.90 prepaid. All 3 to 5 eyes.

\$7.80 PEONY COLLECTION

Elwood Pleas	Mrs. Edw. Harding
Gene Stratton Porter	Opal
Martha Bullock	Ozone
Mary W. Shaylor	Phillippe Rivoire
Mons. Martin Cahuzac	Solange

One each, of these 10, labeled, \$7.80 prepaid. All 3 to 5 eyes.

LOST LABEL PEONIES. Labeled as to colors only. Red, Pink and White, your choice, at 30c each; 4 for \$1.00. Standard 3 to 5 eye divisions.

SONG'S Pansy Seed for Summer Sowing

P1. SUPER-GIANT MIXTURE. Pkt. 25c; 5 Pkts. \$1.00; ¼ oz. \$2.00; ½ oz. \$3.50; oz. \$6.00.

P2. LARGE FLOWERING. Pkt. 10c.

P4. JET BLACK. Medium size. Pkt. 10c.

P5. WHITE. Large. Pkt. 10c.

P6. GOLDEN YELLOW. Large. Pkt. 10c.

P7. MAD. PERRET. Rose. Pkt. 10c.

P8. GIANT MASTERPIECE. Many petals curled; mostly dark, velvety shades. Pkt. 15c.

P9. GIANT BUGNOT. Shades of red, bronze, and reddish cardinal. Mixed. Pkt. 15c.

P10. PRESIDENT CARNOT. White ground with five rich violet blotches. Pkt. 10c.

P11. PRESIDENT MCKINLEY. Glowing yellow, blotched with deep reddish brown. Pkt. 10c.

SWISS GIANT PANSIES, MIXED

P14. Flowers of large size, great substance, novel color combinations. Plants robust. Pkt. 15c.

SWISS BLUE

P15. LAKE OF THUN. A blue different from any other blue or near-blue in pansies. Very distinct and beautiful. Center darker. Pkt. 15c.

SWISS CARDINAL

P16. ALPENGLOW. Another outstanding and very rare color in pansies. Pkt. 15c.

SWISS YELLOW

P16½. RHINEGOLD. Lovely golden yellow with brown blotches on the three lower petals. Pkt. 15c.

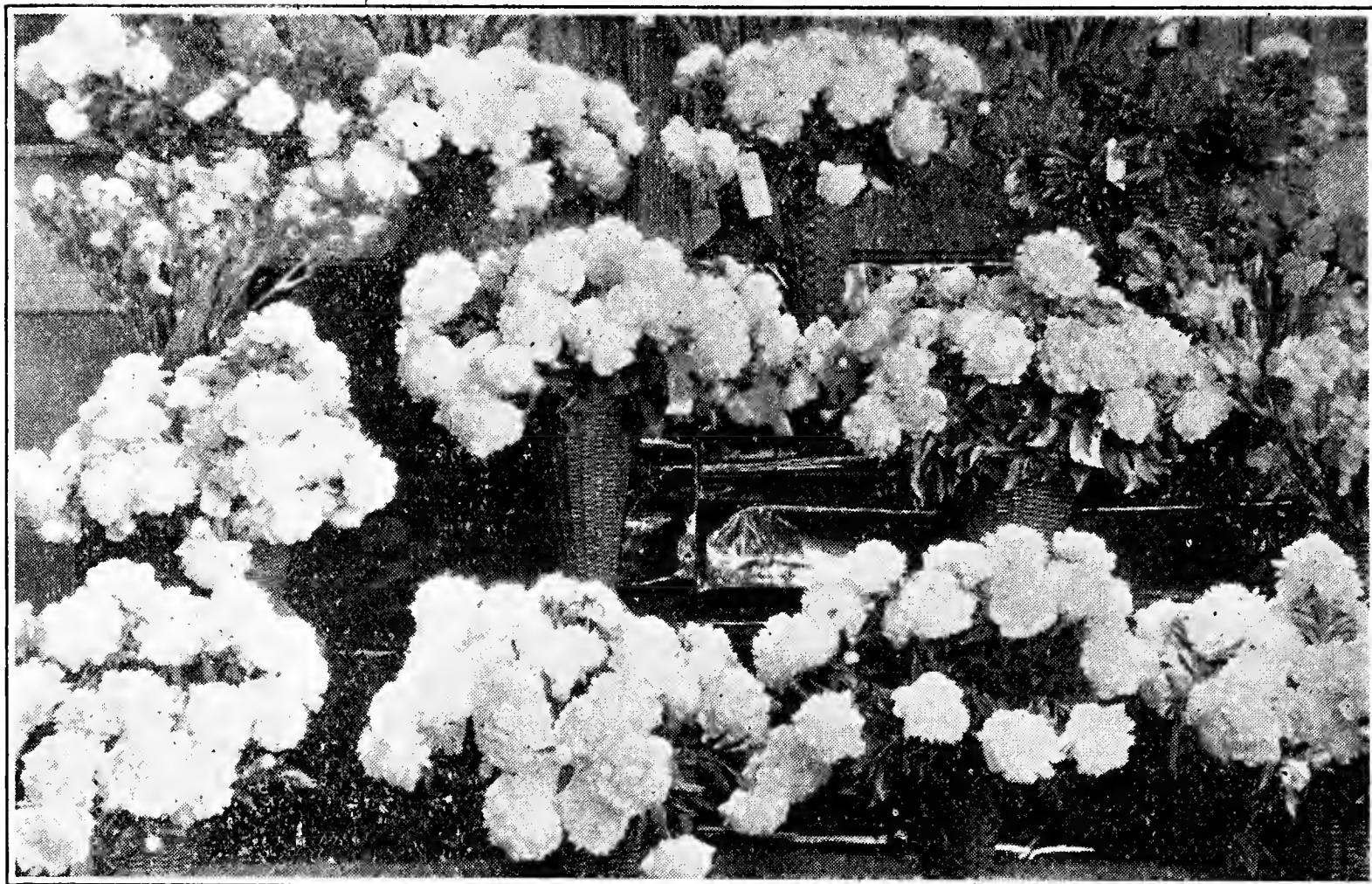
TRIUMPH OF THE GIANTS

P18. The giant blossoms are held high above the foliage on long stems. Petals curled and overlapping. Colors rich, running largely to tones of red, brown, copper, deep yellow, with darker centers. Pkt. 15c.

SPECIAL

Any three 10c Pkts. for 25c; any two 15c Pkts. for 25c.

LONG'S Large and Lovely Peonies



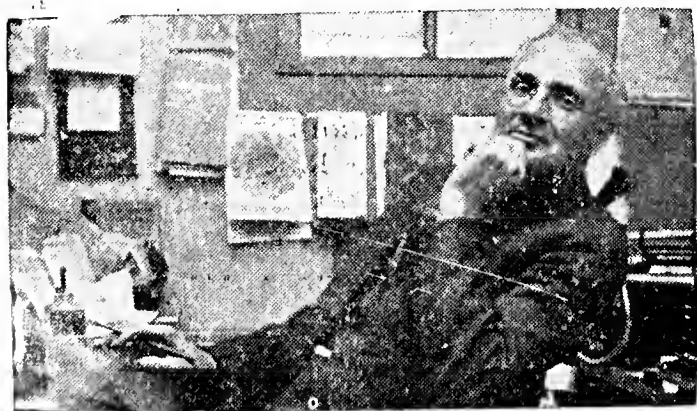
One section of my Peony and Iris display at the Denver show, June 15 and 16, 1933. Was late for the Iris, but several baskets of Frieda Mohr (not shown here) made a wonderful showing. My flowers were entered in the Commercial Non-Competitive Class.

From *J. D. LONG*

Boulder, Colorado

Sec. 562 P. L. & R.
U. S. POSTAGE
PAID
Boulder, Colorado
Permit No. 1

Return Postage
Guaranteed



U. S. Dept. of Agric.
Library
Washington, D. C.

J. D. Sez, Sez 'e! My fall catalogue will be sent you early in September. It will list Gladiolus bulbs at Digging Time Prices. And Tulips, Hyacinths, etc., of course.